

# USER'S MANUAL & Assembly Instructions



# BALLOKA

The Ultimate Water Balloon Launcher



**SCAN TO ACCESS DIGITALLY**



Please read all  
instructions!



**X 8**

Requires 8x AAA Alkaline  
batteries, not included



Some assembly  
required

# Table of **CONTENTS**



<b>1</b>	<b>SAFETY INFORMATION</b>
<b>2</b>	<b>PARTS / BOX CONTENTS</b>
<b>3</b>	<b>ASSEMBLY INSTRUCTIONS</b>
<b>4</b>	<b>BALLOKA PREPARATION</b>
<b>5</b>	<b>FILLING BALLOONS</b>
<b>6</b>	<b>OPERATING INSTRUCTIONS</b>
<b>8</b>	<b>CARE AND STORAGE</b>
<b>9</b>	<b>TROUBLESHOOTING</b>
<b>10</b>	<b>LIMITED WARRANTY</b>



# SAFETY INFORMATION

Thank you for your purchase! We are excited for you to begin creating wonderful and lasting memories using the Ballooka water balloon cannon. To help ensure your best experience, read this manual thoroughly and carefully before assembling and operating the device as it contains important safety information. We also encourage you to keep these instructions for future reference.

## Please note:



- This product is age appropriate for 14+. Parental guidance is required.
- This product is intended for outdoor use only.
- Improper use of this product may result in injury or death.
- Users must be able to operate an air compressor and understand how to adjust and maintain air compressor tank pressures.
- For technical support, refer to the Troubleshooting section of this manual.

## TO PREVENT INJURY OR DEATH

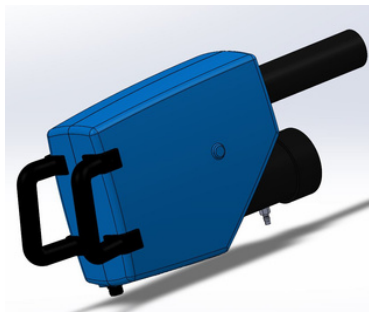


- Direct adult supervision is required.
- This product must be placed on level and even ground prior to use. If placed on unlevel ground, the device may fall over, become damaged or cause serious injury.
- Operate only during the day and during well-lit hours.
- Use ONLY water-filled balloons in the Ballooka. The use of any other object or liquid in the balloon cannon immediately voids its product warranty.
- Balloon Cannon is not responsible for mishandling or misuse of the Ballooka.
- DO NOT over-pressurize the Ballooka. Over-pressurizing this product will result in immediate void of the warranty.
- Over-pressurizing this product can result in injury or death. For safety reasons, there is a safety valve installed on the device to prevent over-pressurizing. It will release if max pressure is achieved.
- The safety valve should not be tampered with or removed for any reason. Doing so will result in immediate void of the warranty.

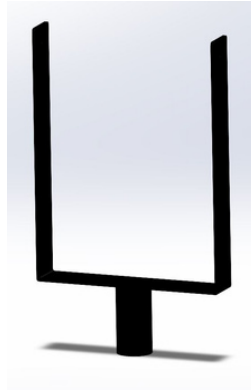


# PARTS / BOX CONTENTS

- Inventory product parts before assembly.
- If any parts are missing or damaged, call 1-701-412-8285 for replacement parts.
- Do not attempt to use this product if any parts are missing or damaged.
- Save all packaging until assembly is complete to ensure parts have not been discarded.



**MAIN CANNON ASSEMBLY**



**PIVOT MOUNT**



**TRIPOD**



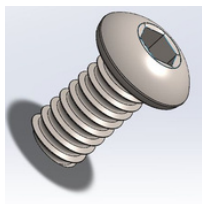
**SIGHT ASSEMBLY**



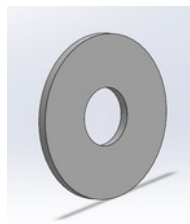
**FRONT SIGHT POST  
X 1**



**BALLOON FILL GAUGE**



**1/4-20 BOLT  
X2**



**NYLON WASHER  
X2**



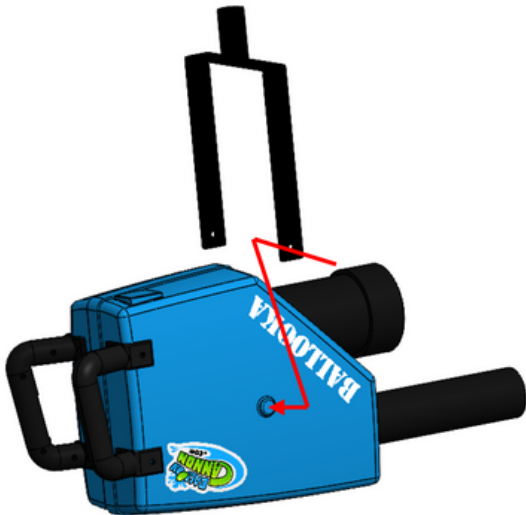
**SMALL BLACK SCREW  
X 1**



# ASSEMBLY INSTRUCTIONS

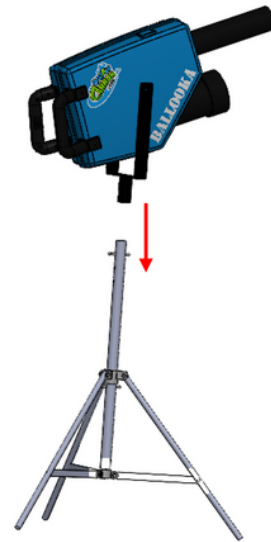
**1**

Flip the main cannon assembly upside-down onto a flat surface and install the pivot mount using the supplied large bolts (2 QTY).



**2**

Extend tripod legs and lock into position. Adjust tripod to proper height and lock into position. Place the main cannon assembly onto the tripod.



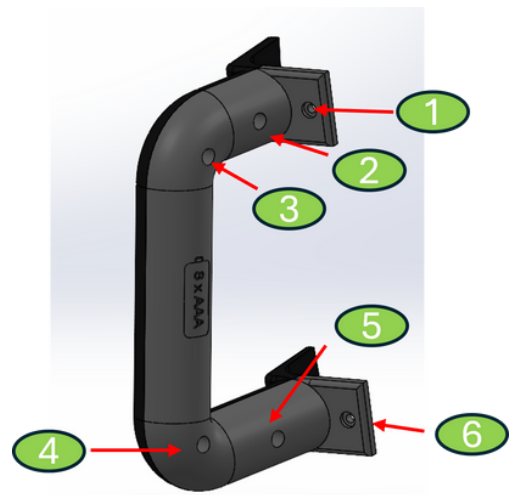
**3**

Install the rear sight assembly by placing in existing holes. Screw down using the small black screw (1 QTY) provided. Install front sight post.



**4**

Remove the 6 inside screws on the left handle of the main cannon assembly. Install 8 AAA batteries (not included). Turn on Balooka to ensure green light comes on. Reinstall 6 screws.



# BALLOKA PREPARATION

1

## GETTING STARTED - BATTLEFIELD PLANNING

The Balloka requires the following in order to operate properly:

- Garden hose connected to a spigot
- Air compressor with air hose
- Level and even ground surface



2

## AIR COMPRESSOR SETUP (MIN 5 GAL RECOMMENDED)

Refer to your air compressor's user's manual for proper operation

- Turn on air compressor
- Compressor should pressurize and automatically turn off
- Adjust air pressure between 30 and 40 PSI (for safety reasons the max pressure for the Balloka is 60PSI at which time the safety valve will release). Too much air pressure may result in damage to the Balloka or serious injury to bystanders



3

## AIR COMPRESSOR HOSE CONNECTIONS

- Connect male end of the air hose to the air compressor
- Connect female end of the air Hose to the bottom of the balloka



4

## GARDEN HOSE CONNECTIONS

- Connect garden hose to spigot.
- Connect other end of garden hose to the Balloka. Ensure plenty of slack in the garden hose so the Balloka can pivot freely
- Turn spigot all the way on



5

## PREPARING FOR BATTLE!

- Make sure no one is directly in front of the balloon cannon
- Flip power switch on (located above the left handle). A green light will appear indicating the Balloka is ready.
- Prime the system (Operating Instructions, Pg 6) by pulling the trigger without a balloon. Do this 3 times waiting 5 secs between shots
- Once water starts shooting out of the end of the barrel, the system is primed and ready for battle. Insert water balloon at the end of the barrel and fire away
- See Pg 5 for proper balloon filling instructions



**WATCH THE VIDEO**





# FILLING BALLOONS

The quality of the balloon you use will directly result in how well the water balloon will launch out of the water cannon. Zuru brand Bunch-O-Balloons have been tested and perform extremely well with the Ballooka. The example here uses Zuru balloons.

- Connect water balloon bundle to water hose.
- Turn water on.
- Place a balloon in the Balloon fill gauge provided.
- Fill balloon until its sides touch the inside of the gauge.
- Shake balloons off and tie off balloon ends.



**1**

**CONNECT WATER  
BALLOONS TO  
WATER HOSE**



**2**

**TURN WATER ON**



**WATCH THE VIDEO**



**3**

**PLACE A BALLOON  
IN FILL GAUGE  
PROVIDED.**



**4**

**FILL BALLOON  
UNTIL ITS SIDES  
TOUCH THE FILL  
GAUGE**



**5**

**SHAKE BALLOONS  
OFF INTO WATER  
FILLED CONTAINER.  
TIE BALLOON ENDS.**





# OPERATING INSTRUCTIONS

**1**

## VERIFY SETUP

- Is the Ballooka is stable and on even ground?
- Are the air and water connections secure?

**2**

## TURN ON THE BALLOOKA

The on/off switch is located near the handles.



**3**

## PRIME THE BALLOON CANNON

- Ensure no one is in front of the cannon.
- Fire the Ballooka by depressing the trigger without a balloon. This will cycle water into the system and prime the balloon cannon. Repeat this step 2-3 times, waiting 5 seconds between trigger pulls.
- When water starts shooting out the end of the barrel upon firing, the system is primed and ready for action.





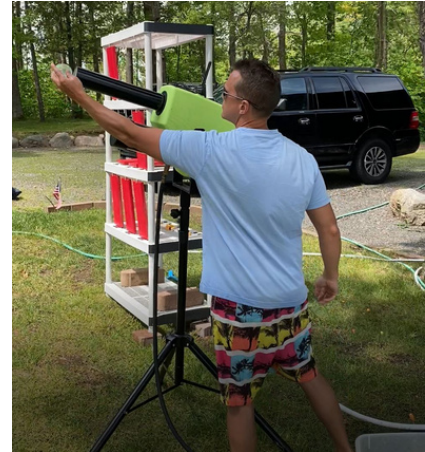


# OPERATING INSTRUCTIONS

4

## LOAD!

Insert water balloon into the end of the barrel.



5

## READY, AIM, FIRE!

At this point your Ballooka is ready to fire. Tilt the housing up and depress the trigger on the handle.

PRO TIP: Make sure that the balloon cannon is always tilted, aiming upward about 15 degrees. If the balloon cannon is not titled back, water from the system will pour out of the barrel and the water balloon will fail to launch.

6

## AFTER OPERATION

After you are done using the balloon launcher, remove the water out of the system.

- Turn the water source off and unscrew water hose from the Ballooka.
- Depress the trigger 4-5 times, waiting 5 seconds between each trigger fire.
- Disconnect the air hose and carefully remove the Ballooka from the tripod.



# CARE AND STORAGE

We hope you will enjoy your Ballooka for years to come! Take these simple steps to care for and store your device after use.



## CARE AND STORAGE

- Make sure all the water is out of the system.
- Wipe down the body and tripod.
- Verify that the balloon cannon is turned off.
- Store the Ballooka in its original packaging for extra protection of the device.
- Store in a dry and generally warm space.
- If you live in a climate that freezes, store the balloon cannon in a place that does not freeze.



## BATTERIES AND LONG-TERM STORAGE

- Remove the batteries if the balloon cannon will be stored or unused for longer than 7 days.



# TROUBLESHOOTING GUIDE

Problem	Potential Causes	Possible Solution
Ballooka on/off switch does not turn on	Ensure batteries not installed	Install 8 new AAA batteries in left handle
	Batteries are old	Install 8 new AAA batteries in left handle
	Battery terminals not in contact with battery holder terminals	Ensure ALL battery terminals are in contact with the battery holder terminals
Excessive water coming from one of the connections	Connections are not tight enough or not connected properly.	Disconnect and try reconnecting
	Damaged garden hose	Inspect water hose for damage and replace
Air leak coming from one of the connections	Not connected properly	Small air leaks are normal and ok. If excessive, undo the connections and try reconnecting
Loud air leak from inside the Balloon Cannon	Air compressor pressure setting is too high	Immediately disconnect the hose from the Ballooka. Check and adjust the air pressure on the air compressor to below 45 PSI, and reconnect.
Water leak from the casing of the Balloon Cannon	Water leak from the internal componets	Anything more than a drip, contact Customer Service
Balloon Cannon not firing after trigger is depressed	Balloon Cannon is turned off	Ensure Balloon Cannon is turned on
	Pressing trigger less than 5 sec between shots	Wait 5 seconds between shooting balloons
	Internal issue with Ballooka	Contact Customer Service
Water balloons keep breaking when I fire the Ballooka	Water balloon walls are too thin	Purchase higher quality water balloons
	Air compressor pressure setting is too high	Turn down air pressure at compressor, optimal pressure is 35 PSI
	Water source connection is not turned on	Ensure the water source is turned. When firing the Balloon Cannon, verify that water is ejecting from the barrel
Water balloons are not shooting very far	Air compressor setting is too low	Ensure the air pressure is between 35-40 psi
	Internal components are wet	Turn off Balloon Cannon and let dry before operating again. If problem persists, contact Customer Service

If after using the troubleshooting guide you are still having issues, contact us at 1-701-412-8285.

# LIMITED WARRANTY

## Six-month limited warranty from the date of sale

This warranty covers normal use and does not cover the Ballooka if damaged by unreasonable use, neglect, accident, abuse, misuse, improper service or other causes not arising out of defects in materials or workmanship. Evidence of any attempt at consumer repair will void this warranty. This warranty does not cover, and is intended to exclude, any liability on the part of Balloon Cannon, whether under this warranty or implied by law for any indirect or consequential damages for breach of warranty. Some states do not allow such exclusion or limitation so this limitation may not apply to you.

**Balloon Cannon** is independently owned and operated within the United States. Repairs that fall within the warranty can be completed at the service center at no cost excluding shipping. Repairs that fall outside of the warranty can also be completed for a fee. For replacement parts email [aaron@ballooncannon.com](mailto:aaron@ballooncannon.com)

